

# Dictados 4º EEBB

Ed. Si bemol

Serie 1: Do Mayor

## Dictado 1

Two staves of musical notation for Dictado 1. The first staff contains the first four measures of a melody in 2/4 time, starting on middle C. The notes are: C4, D4, E4, F4, G4, A4, B4, C5. The second staff contains the next four measures: C5, B4, A4, G4, F4, E4, D4, C4. The piece ends with a double bar line.

## Dictado 2

Two staves of musical notation for Dictado 2. The first staff contains the first four measures of a melody in 2/4 time, starting on middle C. The notes are: C4, D4, E4, F4, G4, A4, B4, C5. The second staff contains the next four measures: C5, B4, A4, G4, F4, E4, D4, C4. The piece ends with a double bar line.

## Dictado 3

Two staves of musical notation for Dictado 3. The first staff contains the first four measures of a melody in 2/4 time, starting on middle C. The notes are: C4, D4, E4, F4, G4, A4, B4, C5. The second staff contains the next four measures: C5, B4, A4, G4, F4, E4, D4, C4. The piece ends with a double bar line.

## Dictado 4

Two staves of musical notation for Dictado 4. The first staff contains the first four measures of a melody in 2/4 time, starting on middle C. The notes are: C4, D4, E4, F4, G4, A4, B4, C5. The second staff contains the next four measures: C5, B4, A4, G4, F4, E4, D4, C4. The piece ends with a double bar line.

## Dictado 5

Two staves of musical notation for Dictado 5. The first staff contains the first four measures of a melody in 2/4 time, starting on middle C. The notes are: C4, D4, E4, F4, G4, A4, B4, C5. The second staff contains the next four measures: C5, B4, A4, G4, F4, E4, D4, C4. The piece ends with a double bar line.

Dictado 6

Two staves of musical notation in 2/4 time. The first staff contains four measures: G4 quarter, A4 quarter, Bb4 quarter, C5 quarter; D4 quarter, E4 quarter, F4 quarter, G4 quarter; A4 quarter, B4 quarter, C#4 quarter, D4 quarter; E4 quarter, F#4 quarter, G4 quarter. The second staff contains four measures: A4 quarter, B4 quarter, C5 quarter, D5 quarter; E5 quarter, F#5 quarter, G5 quarter, A5 quarter; B5 quarter, C6 quarter, D6 quarter, E6 quarter; F6 quarter, G6 quarter, A6 quarter, B6 quarter.

Dictado 7

Two staves of musical notation in 2/4 time. The first staff contains four measures: G4 quarter, A4 quarter, B4 quarter, C5 quarter; D4 quarter, E4 quarter, F#4 quarter, G4 quarter; A4 quarter, B4 quarter, C5 quarter, D5 quarter; E4 quarter, F4 quarter, G4 quarter. The second staff contains four measures: G4 quarter, A4 quarter, B4 quarter, C5 quarter; D4 quarter, E4 quarter, F#4 quarter, G4 quarter; A4 quarter, B4 quarter, C5 quarter, D5 quarter; E4 quarter, F4 quarter, G4 quarter.

Serie 2: La menor

Dictado 8

Two staves of musical notation in 2/4 time. The first staff contains four measures: G4 quarter, A4 quarter, B4 quarter, C5 quarter; D4 quarter, E4 quarter, F4 quarter, G4 quarter; A4 quarter, B4 quarter, C5 quarter, D5 quarter; E4 quarter, F4 quarter, G4 quarter. The second staff contains four measures: G4 quarter, A4 quarter, B4 quarter, C5 quarter; D4 quarter, E4 quarter, F4 quarter, G4 quarter; A4 quarter, B4 quarter, C5 quarter, D5 quarter; E4 quarter, F#4 quarter, G#4 quarter.

Dictado 9

Two staves of musical notation in 2/4 time. The first staff contains four measures: G4 quarter, A4 quarter, B4 quarter, C5 quarter; D4 quarter, E4 quarter, F4 quarter, G4 quarter; A4 quarter, B4 quarter, C5 quarter, D5 quarter; E4 quarter, F4 quarter, G4 quarter. The second staff contains four measures: G4 quarter, A4 quarter, B4 quarter, C5 quarter; D4 quarter, E4 quarter, F4 quarter, G4 quarter; A4 quarter, B4 quarter, C5 quarter, D5 quarter; E4 quarter, F4 quarter, G4 quarter.

Dictado 10

Two staves of musical notation in 2/4 time. The first staff contains four measures: G4 quarter, A4 quarter, B4 quarter, C5 quarter; D4 quarter, E4 quarter, F4 quarter, G4 quarter; A4 quarter, B4 quarter, C5 quarter, D5 quarter; E4 quarter, F4 quarter, G4 quarter. The second staff contains four measures: G4 quarter, A4 quarter, B4 quarter, C5 quarter; D4 quarter, E4 quarter, F4 quarter, G4 quarter; A4 quarter, B4 quarter, C5 quarter, D5 quarter; E4 quarter, F#4 quarter, G#4 quarter.

Dictado 11

Musical notation for Dictado 11, consisting of two staves in 2/4 time. The first staff contains a sequence of eighth notes: C4, D4, E4, F4, G4, A4, B4, C5, followed by a whole note C4. The second staff contains a sequence of eighth notes: C4, D4, E4, F4, G4, A4, B4, C5, followed by a whole note C4.

Dictado 12

Musical notation for Dictado 12, consisting of two staves in 2/4 time. The first staff contains a sequence of eighth notes: C4, D4, E4, F4, G4, A4, B4, C5, followed by a whole note C4. The second staff contains a sequence of eighth notes: C4, D4, E4, F4, G4, A4, B4, C5, followed by a whole note C4.

Dictado 13

Musical notation for Dictado 13, consisting of two staves in 2/4 time. The first staff contains a sequence of eighth notes: C4, D4, E4, F4, G4, A4, B4, C5, followed by a whole note C4. The second staff contains a sequence of eighth notes: C4, D4, E4, F4, G4, A4, B4, C5, followed by a whole note C4.

Dictado 14

Musical notation for Dictado 14, consisting of two staves in 2/4 time. The first staff contains a sequence of eighth notes: C4, D4, E4, F4, G4, A4, B4, C5, followed by a whole note C4. The second staff contains a sequence of eighth notes: C4, D4, E4, F4, G4, A4, B4, C5, followed by a whole note C4.

Dictado 15

Musical notation for Dictado 15, consisting of two staves in 2/4 time. The first staff contains a sequence of eighth notes: C4, D4, E4, F4, G4, A4, B4, C5, followed by a whole note C4. The second staff contains a sequence of eighth notes: C4, D4, E4, F4, G4, A4, B4, C5, followed by a whole note C4.

Dictado 16

Musical notation for Dictado 16, consisting of two staves in 2/4 time. The first staff contains a melody starting on G4, moving to A4, B4, C5, then descending to B4, A4, G4, F4, E4, D4. The second staff contains a bass line starting on G3, moving to A3, B3, C4, then descending to B3, A3, G3, F3, E3, D3.

Serie 4 : La menor

Dictado 17

Musical notation for Dictado 17, consisting of two staves in 2/4 time. The first staff contains a melody starting on G4, moving to A4, B4, C5, then descending to B4, A4, G4, F4, E4, D4. The second staff contains a bass line starting on G3, moving to A3, B3, C4, then descending to B3, A3, G3, F3, E3, D3.

Dictado 18

Musical notation for Dictado 18, consisting of two staves in 2/4 time. The first staff contains a melody starting on G4, moving to A4, B4, C5, then descending to B4, A4, G4, F4, E4, D4. The second staff contains a bass line starting on G3, moving to A3, B3, C4, then descending to B3, A3, G3, F3, E3, D3.

Dictado 19

Musical notation for Dictado 19, consisting of two staves in 2/4 time. The first staff contains a melody starting on G4, moving to A4, B4, C5, then descending to B4, A4, G4, F4, E4, D4. The second staff contains a bass line starting on G3, moving to A3, B3, C4, then descending to B3, A3, G3, F3, E3, D3.

Dictado 20

Musical notation for Dictado 20, consisting of two staves in 2/4 time. The first staff contains a melody starting on G4, moving to A4, B4, C5, then descending to B4, A4, G4, F4, E4, D4. The second staff contains a bass line starting on G3, moving to A3, B3, C4, then descending to B3, A3, G3, F3, E3, D3.

Dictado 21



Dictado 22

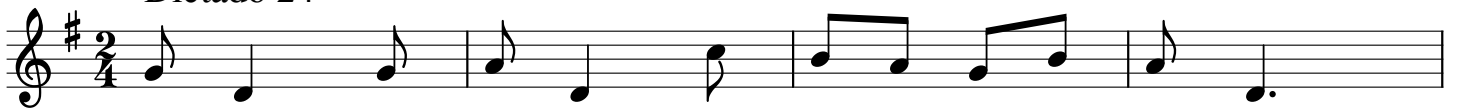


Serie 5: Sol Mayor

Dictado 23



Dictado 24



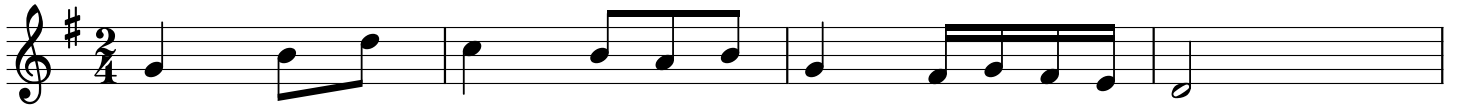
Dictado 25



Dictado 26



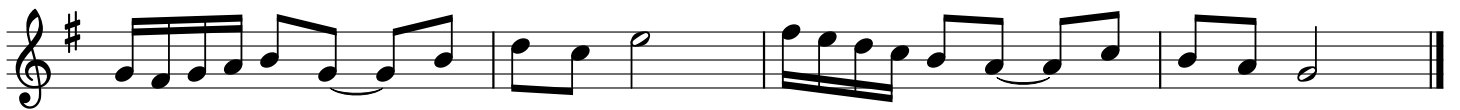
Dictado 27



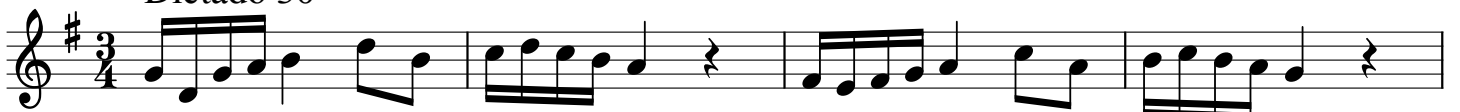
Dictado 28



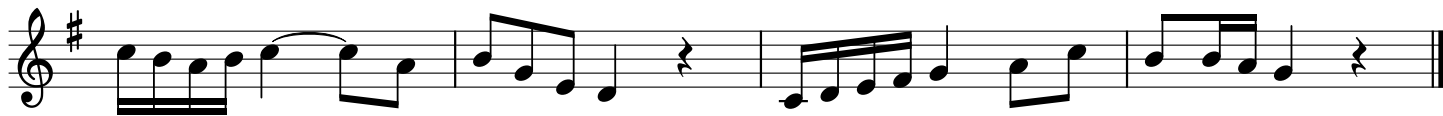
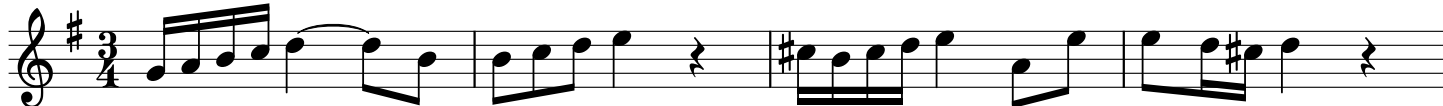
Dictado 29



Dictado 30



Dictado 31



Serie 6: Mi menor

Dictado 32



Dictado 33



Dictado 34



Dictado 35



Dictado 36

Two staves of musical notation for Dictado 36. The first staff contains four measures of music: a quarter note G4, a quarter note A4, a quarter note B4, and a quarter note C5. The second staff contains four measures: a quarter note B4, a quarter note A4, a quarter note G4, and a quarter note F#4. The key signature is one sharp (F#) and the time signature is 2/4.

Dictado 37

Two staves of musical notation for Dictado 37. The first staff contains four measures: a quarter note G4, a quarter note A4, a quarter note B4, and a quarter note C5. The second staff contains four measures: a quarter note B4, a quarter note A4, a quarter note G4, and a quarter note F#4. The key signature is one sharp (F#) and the time signature is 2/4.

Dictado 38

Two staves of musical notation for Dictado 38. The first staff contains four measures: a quarter note G4, a quarter note A4, a quarter note B4, and a quarter note C5. The second staff contains four measures: a quarter note B4, a quarter note A4, a quarter note G4, and a quarter note F#4. The key signature is one sharp (F#) and the time signature is 3/4.

Dictado 39

Two staves of musical notation for Dictado 39. The first staff contains four measures: a quarter note G4, a quarter note A4, a quarter note B4, and a quarter note C5. The second staff contains four measures: a quarter note B4, a quarter note A4, a quarter note G4, and a quarter note F#4. The key signature is one sharp (F#) and the time signature is 3/4.

Dictado 40

Two staves of musical notation for Dictado 40. The first staff contains four measures: a quarter note G4, a quarter note A4, a quarter note B4, and a quarter note C5. The second staff contains four measures: a quarter note B4, a quarter note A4, a quarter note G4, and a quarter note F#4. The key signature is one sharp (F#) and the time signature is 3/4.





Dictado 46

Two staves of musical notation for Dictado 46. The first staff begins with a treble clef, a key signature of one flat (Bb), and a 6/8 time signature. The melody consists of eighth and quarter notes. The second staff continues the melody, ending with a double bar line.

Dictado 47

Two staves of musical notation for Dictado 47. The first staff begins with a treble clef, a key signature of one flat (Bb), and a 3/4 time signature. The melody features eighth and quarter notes, including a sharp sign (#) on the second staff. The second staff continues the melody, ending with a double bar line.

Dictado 48

Two staves of musical notation for Dictado 48. The first staff begins with a treble clef, a key signature of one flat (Bb), and a 2/4 time signature. The melody consists of eighth and quarter notes. The second staff continues the melody, ending with a double bar line.

Dictado 49

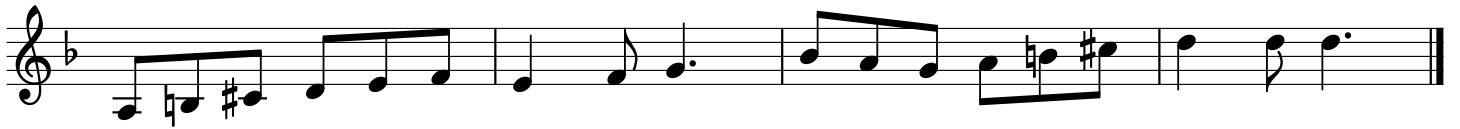
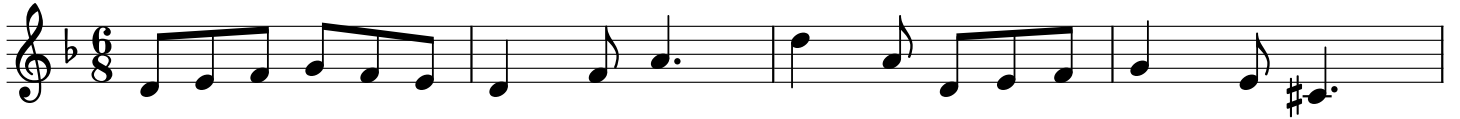
Two staves of musical notation for Dictado 49. The first staff begins with a treble clef, a key signature of one flat (Bb), and a 2/4 time signature. The melody consists of eighth and quarter notes. The second staff continues the melody, ending with a double bar line.

Serie 8: Re menor

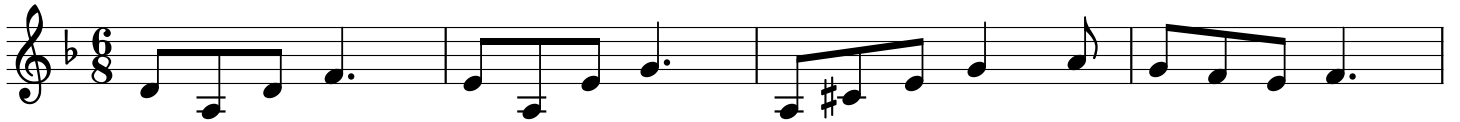
Dictado 50

Two staves of musical notation for Dictado 50. The first staff begins with a treble clef, a key signature of one flat (Bb), and a 6/8 time signature. The melody consists of eighth and quarter notes, including a sharp sign (#) on the first staff. The second staff continues the melody, ending with a double bar line.

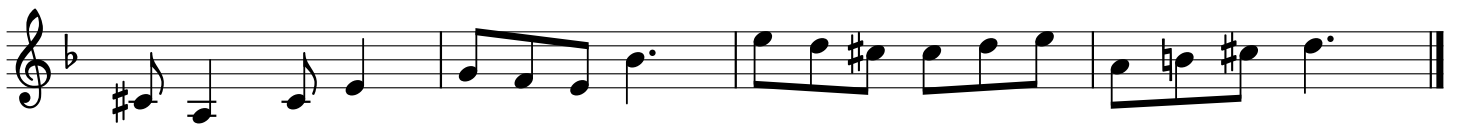
Dictado 51



Dictado 52



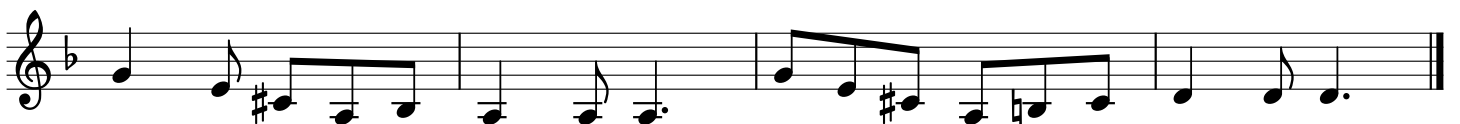
Dictado 53



Dictado 54



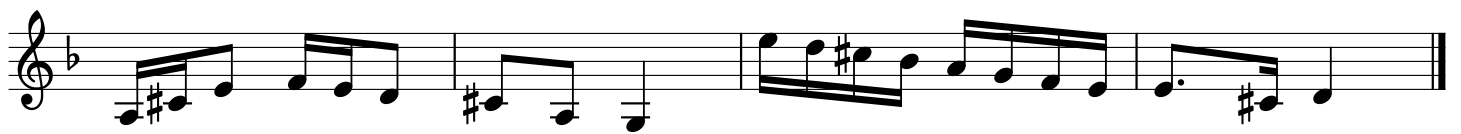
Dictado 55



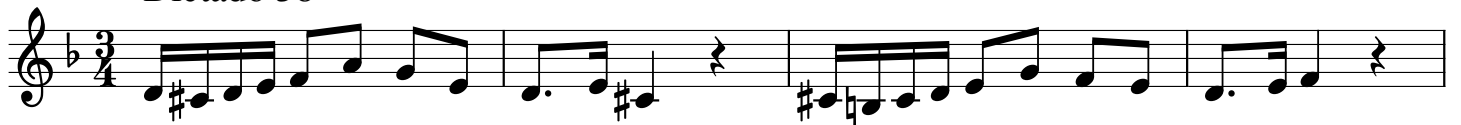
Dictado 56



Dictado 57

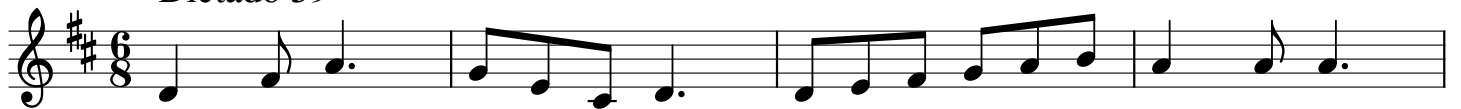


Dictado 58



Serie 9: Re Mayor

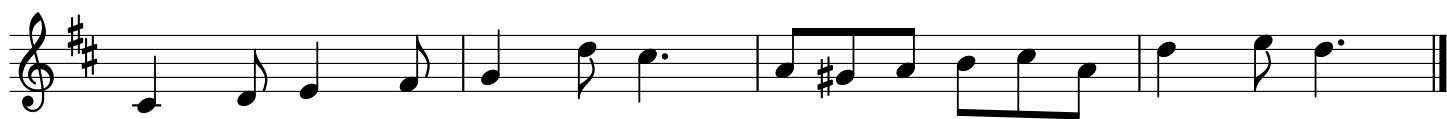
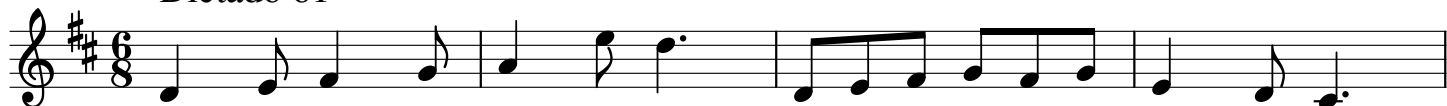
Dictado 59



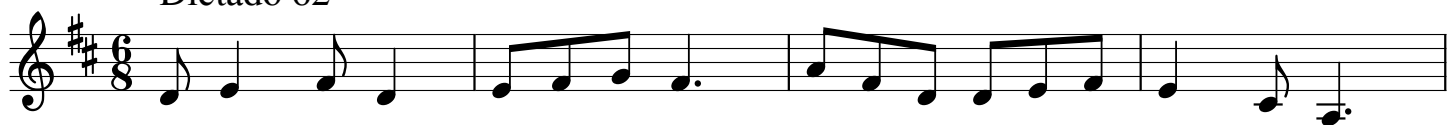
Dictado 60



Dictado 61



Dictado 62



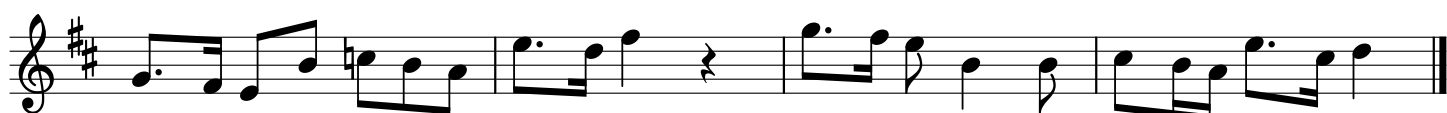
Dictado 63



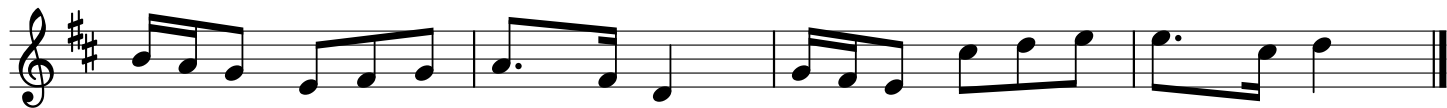
Dictado 64



Dictado 65



Dictado 66



Dictado 67

